



**Lines of research**

- **Forest Policy**
- **Environmental Services**
- **Forest and Agroforestry Systems**
- **Economic Valuation of the Environment**
- **Forest Management (timber and non-timber forest products)**
- **Integrated Watershed Management**
- **Geopolitics of the Environment and Land Management**
- **Waste and Solid Waste Management**
- **Alternative Energies**
- **Climate Change**
- **Spatial Data Management**



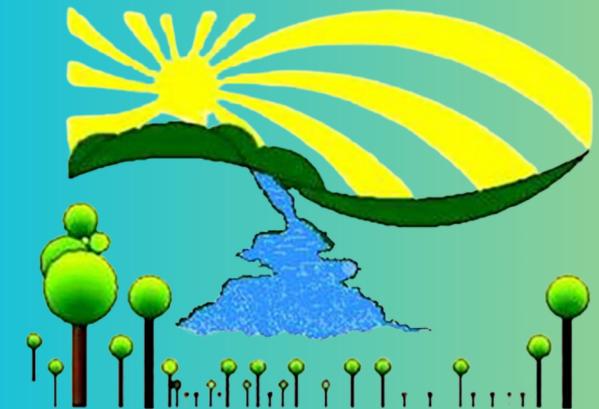
**International Cooperation**

has been developed mainly as a Cooperating Institution with international organisations, especially with different United Nations programmes such as the United Nations Environment Programme (UNEP), the United Nations Development Programme (UNDP), the Food and Agriculture Organisation of the United Nations (FAO) and some European organisations such as the Spanish Agency for International Development Cooperation (AECID).

For more information please visit:  
<http://www.minec.gob.ve/>  
<https://ifla-ve.com/>



**Latin American Forestry Institute Foundation**



## Latin American Forestry Institute Foundation

Its main principles are:

- Ecosystem service assessment and conservation
- Assessment and monitoring of forest cover change
- Climate environmental education
- Climate-smart agriculture
- Agroclimatic social organisation
- Environmental impact assessment and study
- Sustainable land use planning

### Mission

Institutional role is oriented as a link between the governing body of the national policy formulated in environmental matters, between the Academy, the national and international scientific sector and other state institutions, in the field of Integrated Management of Natural Resources.

### Vision

The Latin American Forestry Institute aims to develop research, training, documentation and extension activities in the field of integrated management of the environment and forest resources, which contribute to strengthening the policy of the Ministry of People's Power for Ecosocialism and other state institutions, as well as providing appropriate and socially relevant scientific and technical responses, in order to ensure the rational, optimal and sustainable use and exploitation of natural resources, respecting the processes and cycles of nature, based on a harmonious relationship between man and the environment.